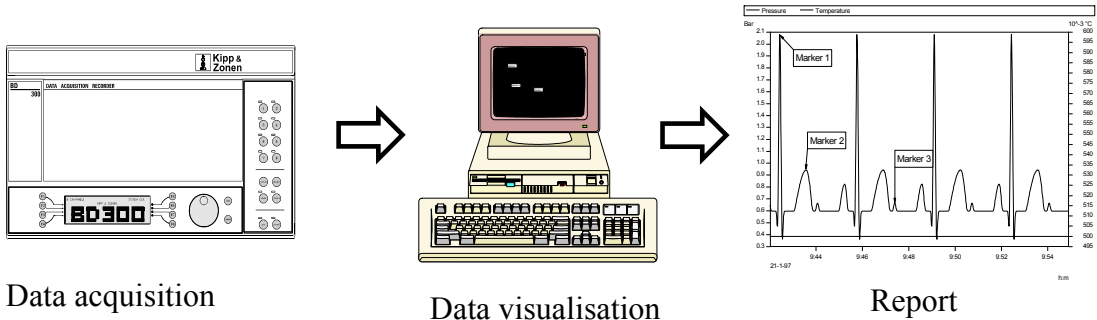


BD300 data visualisation with LOOK software

For optimal visualisation of the data collected by the BD300, a PC connectivity package is available including a software program called LOOK. This package is a part of the well known program FAMOS, that contains extended data calculation possibilities.

The software package LOOK that we supply has an build in special import filter that directly reads the compressed data from a BD300 disk or reads the ASCII data as send over the RS232 port.

The import filter reads the Engineering units as used in the BD300 and shows the exact time and date of the collected data. Data collected with LOOK can also be used in conjunction with FAMOS for further analysis.



After installing the LOOK software with BD300 import filter and starting the program, double clicking on a file name from a BD300 disk decompresses the data. The number of imported data points is not limited by LOOK only the amount of free space on the hard disk or diskette could be a limitation. The visualisation of the data can be done channel by channel or all in one graph. At first all channels are showed fully from start of logging till logging end, and with the so called navigator an interesting part of the data can be zoomed. To help the user find the relevant part an overview window can be displayed to show the location of the zoomed part in the complete data graph. (see fig. 1)

All attributes like curve- and background colours, grid, scaling and axis can be set per session or stored as default for personal use.

Once the data is displayed in the required format, markers can be set to highlight points of interest in the curve. These markers contain standard the X-Y value of the closest data point, but this can be changed to any text in any size.

When the data is displayed in the right format, this picture can be transferred to clipboard or to the so called report generator of LOOK.

For use in any other window program the picture will be exported as a Window Meta File (*.WMF), this has the advantage that full resolution is transferred and the text can be changed in the receiving application. (see fig. 2)

Using the report generator gives the user full control over the format of graph and text.

The lay-out of the report can be saved and used at any time to generate a similar report with new imported data.

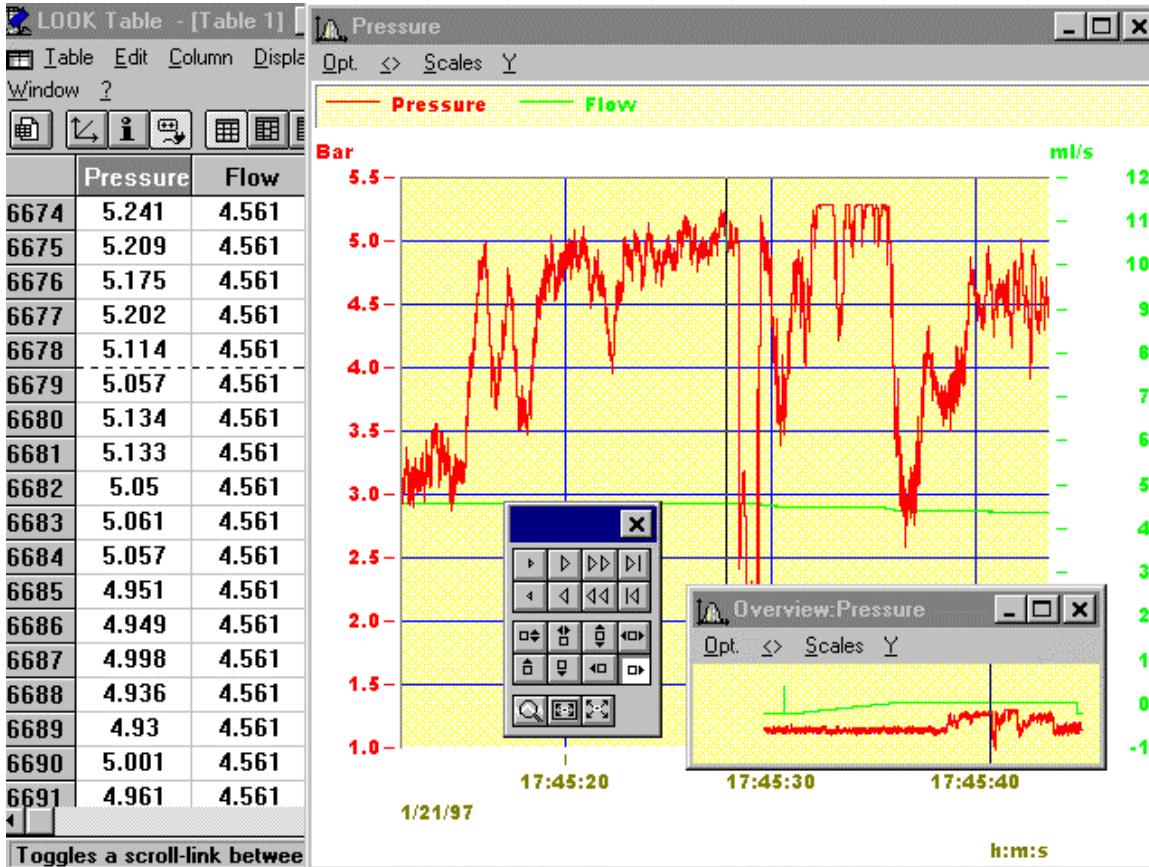


Figure 1: Shows a screen dump from LOOK, with on the left hand side the data in spreadsheet format, with time, and in the correct engineering units. On the right hand side the zoomed graph is showed with overview window and navigator. The columns and graph can be linked together so scrolling through the data points will scroll the graph as well. This allows for fast and exact visualisation of both wave form and digital value.

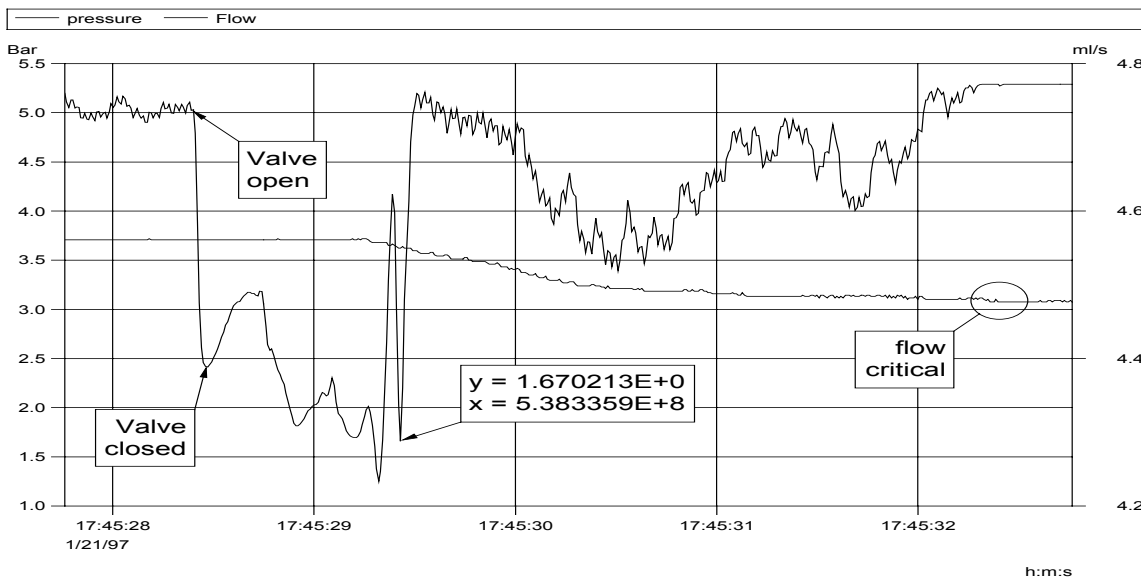


Figure 2: Shows a sample of a labelled graph exported to the LOOK report generator or transferred to a word processor document.